



Access World-Leading Research

- **A scientific arc of excellence** made up of universities, research centres, science and technology parks and major infrastructures
- **Leading research** in supercomputing, quantum physics, photonics, biomedicine or artificial intelligence
- **Great ability to attract talent:** 33% of researchers come from abroad
- **3rd EU region in terms of research and innovation project funding**
- **More than half of scientific publications are in high impact journals (55%) and involve international collaboration (60%)**



Innovation and Competitiveness

- **Highly innovative country: according to the European innovation ranking,** Catalonia stands out in the indicators on percentage of the population with higher education, application of trademarks in relation to GDP, international scientific publications per inhabitant, public-private publications per inhabitant, and percentage of the population with advanced digital skills
- **Interconnection of the research system with the business fabric** to foster a knowledge-based economy



Best Living Experience

- **A country to be discovered: from the Mediterranean Sea to the Pyrenees mountains,** just a few hours away, Catalonia offers a rich array of cultural and leisure opportunities, acclaimed gastronomy and a climate that makes it an ideal place for a unique life experience
- **A cultural identity and a language that is thousands of years old: Catalan**
- **University life:** sports activities, libraries, language services, support in finding accommodation, career guidance, and much more!



Highlight your Future. Study in Catalonia



Academic Excellence

- **University model that stresses research** and the generation and transfer of knowledge
- **Wide range of qualifications accredited by quality agencies:** Arts and Humanities, Sciences, Health Sciences, Social and Legal Sciences, Engineering and Architecture
- **Positioning in the main international rankings:**
 - **European universities:** 4 universities in the top 150 (QS World University Rankings: Europe 2025)
 - **Young universities:** 1 university ranked 15th out of Europe's best – 4 universities in top 100 in Europe and top 200 worldwide
 - **Excellence in teaching:** 3 Catalan universities in the European top 100 (THE World University Rankings 2024)



International Environment

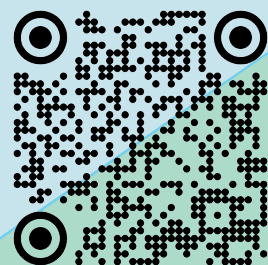
- **179 bachelor's, master's and PhD programmes in English**
- **International students: 4 out of 10 master's and PhD students** come from other university systems
- **Campuses connected to around 100 higher education institutions** through active participation in 10 European university alliances



Social Commitment

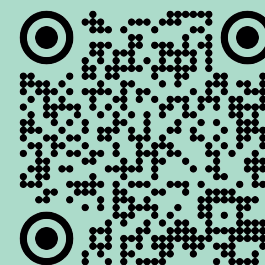
- Teaching and research activity aligned with **Sustainable Development Goals**
- **Gender equality, respect for sexual diversity and disabilities, equal access and equal opportunities are priorities** for the Catalan university system

Studyin catalonia.com



B16322-2024

Studyin catalonia.com



Generalitat de Catalunya
Government of Catalonia



Generalitat de Catalunya
Government of Catalonia

Universities

University of Barcelona

- Plaça Universitat Campus and Raval Campus. **Barcelona**
- Clínic August Pi i Sunyer Campus. **Barcelona**
- Bellvitge Campus. **L'Hospitalet de Llobregat**
- Sants Campus. **Barcelona**
- Diagonal Portal del Coneixement Campus. **Barcelona**
- Mundet Campus. **Barcelona**
- Torribera Food Campus. **Santa Coloma de Gramenet**
- College of New Technologies (ENTI-UB). **Barcelona**
- Film and Audiovisual School of Catalonia (ESCAC). **Terrassa**
- University School of Public Relations (ESRP). **Barcelona**
- Barcelona School of Tourism, Hospitality and Gastronomy (CETT). **Barcelona**
- Sant Joan de Déu Teaching Campus. **Sant Boi de Llobregat**
- Institute for Public Safety of Catalonia (ISPC). **Mollet del Vallès**
- National Institute of Physical Education of Catalonia (INEFC). **Barcelona**
- International University Centre of Barcelona (UNIBA) – Barcelona Culinary Hub. **Barcelona**
- Centre for International Studies (CEI). **Barcelona**
- Institute for Lifelong Learning (IL3). **Barcelona**

Universitat Politècnica de Catalunya-BarcelonaTech

- Diagonal Nord Campus. **Barcelona**
- Diagonal Sud Campus. **Barcelona**
- Diagonal-Besòs Campus. **Barcelona/Sant Adrià de Besòs**
- Nàutica Campus. **Barcelona**
- Baix Llobregat Campus. **Castelldefels**
- Manresa Campus
- Sant Cugat del Vallès Campus
- Terrassa Campus
- Vilanova i la Geltrú Campus
- Euncet Business School (EUNCET). **Terrassa/Barcelona**

Universitat Autònoma de Barcelona

- Bellaterra Campus. **Cerdanyola del Vallès**
- Sabadell Campus
- Casa Convalescència. **Barcelona**
- Vall d'Hebron University Hospital Faculty of Medicine Teaching Unit. **Barcelona**
- Hospital de la Santa Creu i Sant Pau Faculty of Medicine Teaching Unit. **Barcelona**
- Hospital Germans Trias i Pujol Faculty of Medicine Teaching Unit. **Badalona**
- Hospital Parc Taulí Faculty of Medicine Teaching Unit. **Sabadell**
- University School of Nursing and Occupational Therapy (EUIT). **Terrassa**
- Gimbernat i Tomàs Cerdà University Schools (EUG). **Sant Cugat del Vallès**
- Salesian University School of Sarrià (EUSS). **Barcelona**
- EINA School of Design and Art. **Barcelona**
- Escola Massana. Art and Design Centre. **Barcelona**

Pompeu Fabra University

- Ciutadella Campus. **Barcelona**
- Poblenou Campus. **Barcelona**
- Mar Campus. **Barcelona**
- TecnoCampus Mataró
- School of International Business (ESCI). **Barcelona**
- Hospital del Mar Nursing School (ESIHMar). **Barcelona**
- BIST Dolores Aleu Graduate Centre (BIST DAGC). **Barcelona**
- Barcelona School of Economics (BSE). **Barcelona**
- UPF Barcelona School of Management (UPF-BSM). **Barcelona**
- Barcelona Institute for International Studies (IBEI). **Barcelona**

Key Data

12 universities

300,544 students

59 research centres

3 major research infrastructures

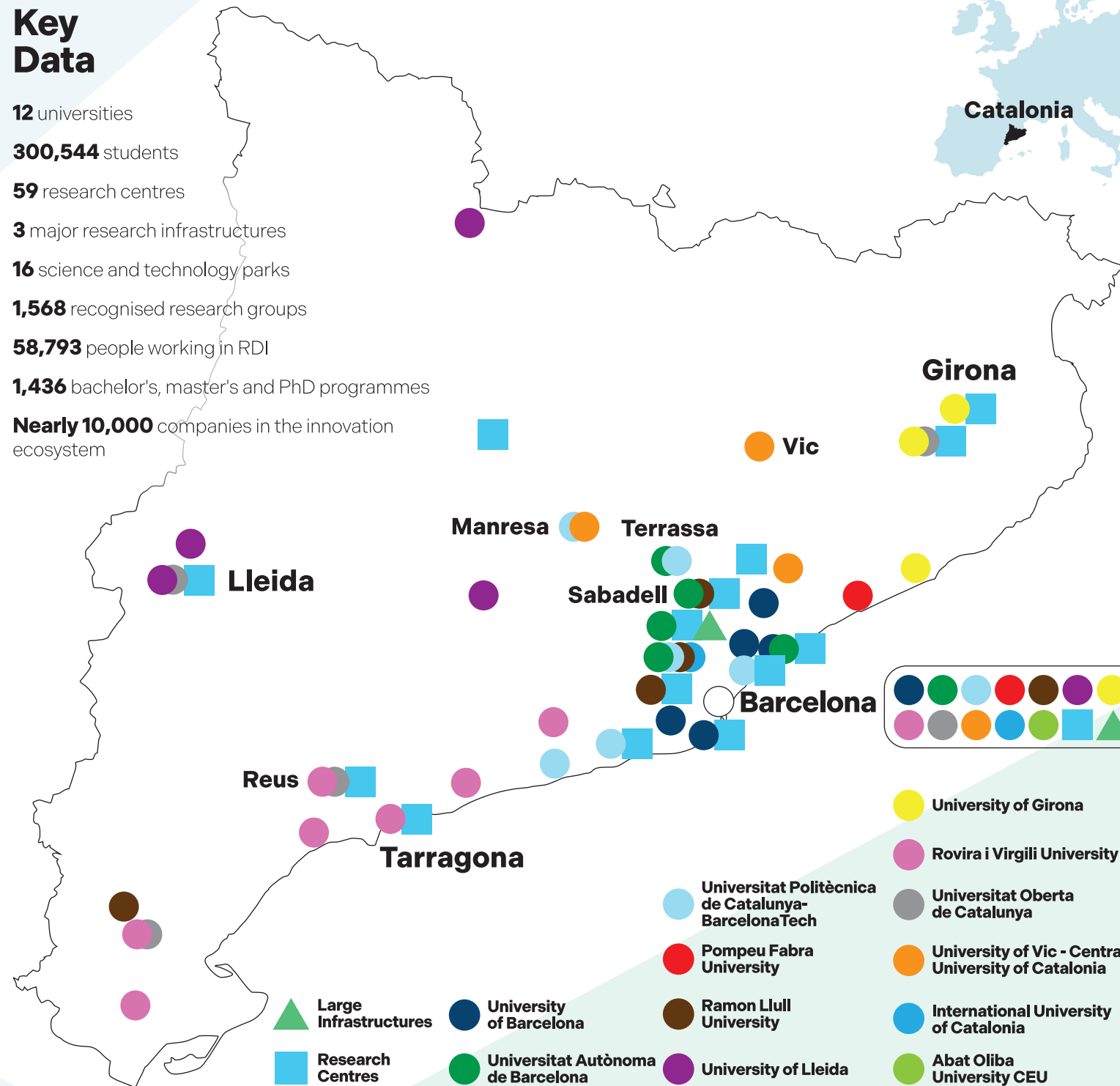
16 science and technology parks

1,568 recognised research groups

58,793 people working in RDI

1,436 bachelor's, master's and PhD programmes

Nearly 10,000 companies in the innovation ecosystem



Universities

Ramon Llull University

- IQS. **Barcelona**
- Blanquerna. **Barcelona**
- La Salle. **Barcelona**
- ESADE Business School. **Barcelona/Sant Cugat del Vallès**
- Pere Tarrés Faculty of Social Education and Social Work. **Barcelona**
- Ebro Observatory University Institute. **Roquetes**
- Borja Institute of Bioethics. **Esplugues de Llobregat**
- Vidal i Barraquer University Institute of Mental Health. **Barcelona**
- ESDi Higher School of Design. **Barcelona/Sabadell**

University of Lleida

- Rectorat Campus. **Lleida**
- Health Sciences Campus. **Lleida**
- Capped Campus. **Lleida**
- Agrifood, Forestry and Veterinary Campus. **Lleida**
- Igualada Campus
- Torrelameu Campus
- National Institute of Physical Education of Catalonia (INEFC). **Lleida**
- National Institute of Physical Education of Catalonia (INEFC) – Pyrenees. **La Seu d'Urgell**
- University School of Labour Relations. **Lleida**
- Ostelea Tourism Management School. **Barcelona**

University of Girona

- Barri Vell Campus. **Girona**
- Montilivi Campus. **Girona**
- Centre Campus. **Girona**
- University School of Health and Sport (EUSES-UdG). **Salt**
- University School of Arts (ERAM). **Salt**
- University College of Hospitality Management and Culinary Arts of Sant Pol de Mar (EUHT StPOL). **Sant Pol de Mar**
- EU Mediterrani. **Barcelona**
- EUROAULA. University College. **Barcelona**

Rovira i Virgili University

- Sescelades Campus. **Tarragona**
- Catalunya Campus. **Tarragona**
- Bellissens Campus. **Reus**
- Vila-seca Campus
- Terres de l'Ebre Campus. **Tortosa**
- El Baix Penedès office. **El Vendrell**
- Vilafranca del Penedès office
- University School of Health and Sport (EUSES-URV). **Amposta**
- Centre for Higher Aviation Studies (CESDA). **Reus**
- ESIC Business & Marketing School. **Barcelona**
- IGEMA Business School. **Barcelona**

Universitat Oberta de Catalunya

- Barcelona Campus
- Lleida regional office
- Salt regional office
- Reus regional office
- Tortosa regional office

University of Vic - Central University of Catalonia

- Vic Campus
- Manresa Campus
- Barcelona Campus
- Granollers office

International University of Catalonia

- Barcelona Campus
- Sant Cugat Campus

Abat Oliba University CEU

- Bellesguard Campus. **Barcelona**

Research Centres

CERCA Centres

- Centre for Research in Agrotechnology (AGROTECNIO). **Lleida**
- Centre for Demographic Studies (CED). **Cerdanyola del Vallès**
- International Center for Numerical Methods in Engineering (CIMNE). **Barcelona**
- Centre for Research in Agricultural Genomics (CRAG). **Cerdanyola del Vallès**
- Centre for Ecological Research and Forestry Applications (CREAF). **Cerdanyola del Vallès**
- Centre de Recerca en Economia Internacional (CREI). **Barcelona**
- Centre for Genomic Regulation (CRG). **Barcelona**
- Centre for Mathematical Research (CRM). **Bellaterra**

- Forest Science and Technology Centre of Catalonia (CTFC). **Solsona**
- Telecommunications Technological Centre of Catalonia (CTTC). **Castelldefels**
- Computer Vision Centre (CVC). **Cerdanyola del Vallès**
- Internet and Digital Innovation in Catalonia (i2cat). **Barcelona**
- Parc Taulí Research and Innovation Institute (I3PT). **Sabadell**
- Institute for Bioengineering of Catalonia (IBEC). **Barcelona**
- Barcelona Institute of International Studies (IBEI). **Barcelona**
- Catalan Institute of Classical Archaeology (ICAC). **Tarragona**
- Institute of Photonic Sciences (ICFO). **Castelldefels**

- Institute of Chemical Research of Catalonia (ICIQ). **Tarragona**
- Catalan Institute of Nanoscience and Nanotechnology (ICN2). **Cerdanyola del Vallès**
- Catalan Institute of Paleontology Miquel Crusafont (ICP). **Sabadell**
- Catalan Institute for Water Research (ICRA). **Girona**
- Catalan Institute for Research in Cultural Heritage (ICRPH). **Girona**
- August Pi i Sunyer Biomedical Research Institute (IDIBAPS). **Barcelona**
- Bellvitge Biomedical Research Institute (IDIBELL). **L'Hospitalet de Llobregat**
- Girona Biomedical Research Institute (IDIBGI). **Salt**

- Institute of Space Studies of Catalonia (IEEC). **Castelldefels**
- Institute for High Energy Physics (IFAE). **Cerdanyola del Vallès**
- Health Sciences Research Institute of the Germans Trias i Pujol Foundation (IGTP). **Badalona**
- Pere Virgili Health Research Institute (IISPV). **Reus**
- Josep Carreras Leukaemia Research Institute (IJC). **Badalona**
- Hospital del Mar Medical Research Institute (IMIM). **Barcelona**
- Sant Pau Institute of Biomedical Research (IR Sant Pau). **Barcelona**
- Catalan Institute for Human Palaeoecology and Social Evolution (IPHES). **Tarragona**
- Institute for Research in Biomedicine (IRB Barcelona). **Barcelona**

- Biomedical Research Institute of Lleida (IRB Lleida). **Lleida**
- Catalonia Institute for Energy Research (IREC). **Sant Adrià de Besòs**
- Institute for AIDS Research (IrsiCaixa). **Badalona**
- Sant Joan de Déu Research Institute (SJD). **Esplugues de Llobregat**
- Institute of Agrifood Research and Technology (IRTA). **Caldes de Montbui**
- Barcelona Institute for Global Health (ISGlobal). **Barcelona**
- Vall d'Hebron Institute of Oncology (VHIO). **Barcelona**
- Vall d'Hebron Research Institute (VHIR). **Barcelona**

CSIC Centres

- Botanical Institute of Barcelona (IBB-CSIC). **Barcelona**
- Blanes Centre for Advanced Studies (CEAB). **Blanes**
- Institute for Economic Analysis (IAE). **Cerdanyola del Vallès**
- Institute of Microelectronics of Barcelona (IMB-CNM-CSIC). **Cerdanyola del Vallès**
- Institute of Materials Science of Barcelona (ICMAB). **Cerdanyola del Vallès**
- Artificial Intelligence Research Institute (IIA). **Cerdanyola del Vallès**
- Institute of Space Sciences (ICE). **Cerdanyola del Vallès**
- Milà i Fontanals Institute for Humanities Research (IMF). **Barcelona**
- Institute of Biomedical Research of Barcelona (IIBB). **Barcelona**

- Institute of Evolutionary Biology (IBE). **Barcelona**
- Institute of Marine Sciences (ICM). **Barcelona**
- Marine Technology Unit - Mediterranean Centre for Marine and Environmental Research (UTM-CMIMA). **Barcelona**
- Molecular Biology Institute of Barcelona (IBMB). **Barcelona**
- Geosciences Barcelona (GEO3BCN). **Barcelona**
- Institute of Robotics and Industrial Informatics (IRII). **Barcelona**
- Institute for Advanced Chemistry of Catalonia (IQAC). **Barcelona**
- Institute of Environmental Diagnosis and Water Studies (IDAEA). **Barcelona**

Large Infrastructures

- Alba Synchrotron, CELLS Consortium. **Cerdanyola del Vallès**
- MareNostrum supercomputer at the Barcelona Supercomputing Center. **Barcelona**
- National Genome Analysis Centre (CNAG). **Barcelona**

Knowledge map

